

24 March 2022

WINSOME PROGRESSES GEOPHYSICAL TARGETING AT FLAGSHIP LITHIUM PROJECT

Highlights:

- Detailed ground gravity survey commences at flagship Cancet project in Quebec
- Geophysical services provider Abitibi Geophysics engaged to complete surveying, supervised by Perth-based geophysical consultancy NewGen Geo Pty Ltd
- Numerous high-priority geophysical targets identified for follow-up

Western Australian-based lithium exploration and development company Winsome Resources (ASX:WR1; “Winsome” or “the Company”) is pleased to advise detailed ground gravity surveying has commenced at its flagship Cancet property in the James Bay region of Quebec, Canada.

The Company has engaged local geophysical services provider Abitibi Geophysics to complete the initial two-week program under the supervision of Perth-based geophysical consultancy NewGen Geo Pty Ltd.

The detailed ground gravity survey is focused on providing an indication of possible extensions of the mineralised Cancet pegmatites at depth. It also aims to validate the applicability of the gravity technique as an exploration tool for lithium-bearing pegmatites across the Company’s concessions in northern Quebec.

The gravity method measures spatial variations in the Earth’s gravity field caused by contrasts in rock density. The intrusion of a mineralised pegmatite swarm into elongated gabbroic sills at Cancet is anticipated to be expressed as a detectable gravity response. The gabbroic sills are also more magnetic than the surrounding rocks and discernible in processed magnetic maps.

Winsome’s recent review of regional magnetic data from SIGÉOM (the Quebec government geomining information system) has highlighted numerous analogous magnetic anomalies. These are believed to be indicative of other previously unrecognised gabbroic sills, and potential favourable sites for additional pegmatite intrusion.

Winsome Resources Managing Director Chris Evans said:

“The Company is excited to trial this non-traditional approach of combining detailed geophysical surveying for lithium-bearing pegmatite exploration.

“The gravity surveying technique will provide an effective screening tool to prioritise sills which are more likely to host pegmatites for future drill testing.

“We are pleased the ground gravity surveying has commenced at our Cancet project. This technique has the potential to deliver new undercover targets while reducing its environmental impact.”

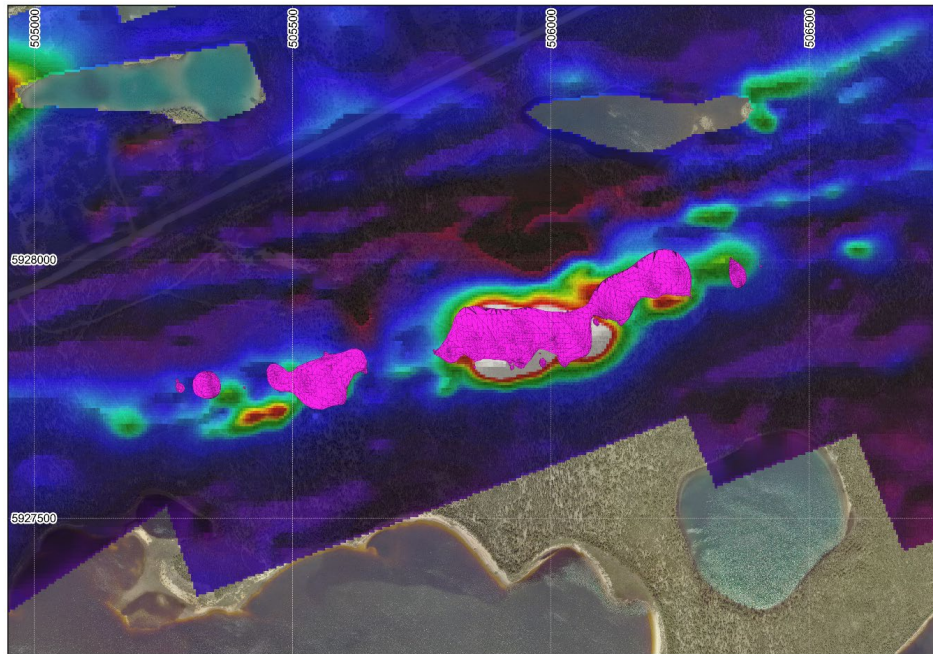
ASX ANNOUNCEMENT



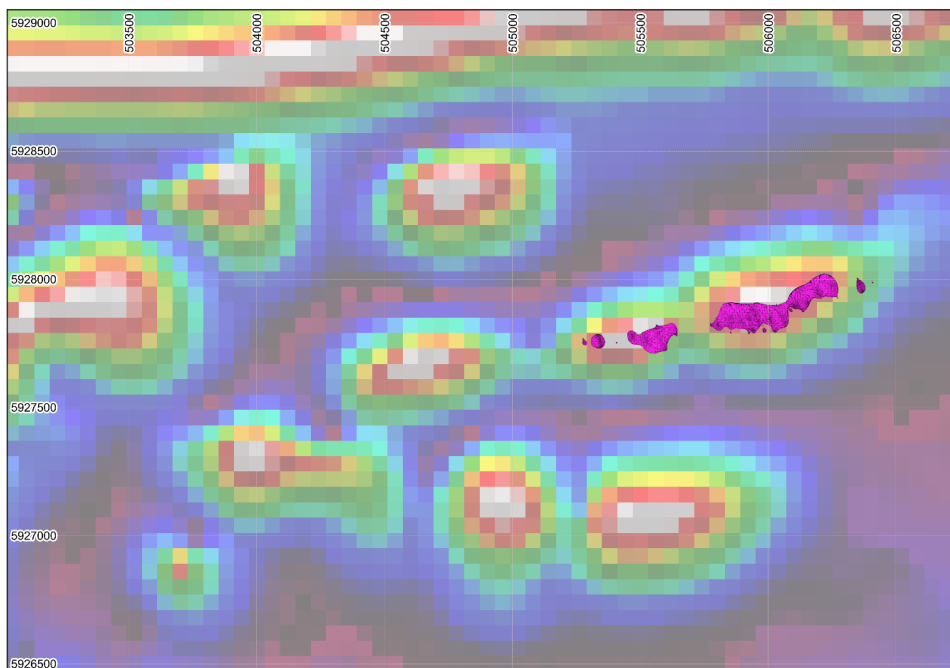
Planned ground gravity stations at Cancet (imagery courtesy of Google Earth).



Gravity base station set-up.



Cancet Lithium mineralisation outlines (magenta) over ground magnetics (TMI) map.



Cancet Lithium mineralisation outlines (magenta) over airborne magnetics (RTP TILT) map.

ASX ANNOUNCEMENT



This announcement is authorised by the Winsome Board of Directors.

-ENDS-

About Winsome Resources

Winsome Resources (ASX: WR1) is a Perth-based, lithium focused exploration and development company with four project areas in Quebec, Canada.

Three of Winsome's projects – Cancet, Adina and Sirmac-Clappier are 100% owned by the Company. The Company has exclusive rights to explore and subsequently purchase its most recent project, Decelles, located near Val-d'Or, also in Quebec. The most advanced project – Cancet - provides a shallow, high grade lithium deposit and is strategically located close to established infrastructure and supply chains.

Winsome is led by a highly qualified team with strong experience in lithium exploration and development as well as leading ASX listed companies.

More details: www.winsomeresources.com.au.

Further information:

Investors

Chris Evans – Managing Director
Winsome Resources
administration@winsomeresources.com.au

Media

Jessica Gabites
Spoke Corporate
jessica@spokecorporate.com
+61 412 784 587